



Investing in the Past while Protecting the Future

2024

CAPITAL CAMPAIGN

GAMMELGÅRDEN MUSEUM

2024 Capital Campaign - \$50,000



HISTORICAL BUILDINGS
AND ARTIFACTS



ACCESSIBILITY AND
SAFETY



OFFICE EQUIPMENT



CONSERVATION FUND

Need for a Capital Campaign

HISTORICAL BUILDINGS AND ARTIFACTS

- **Restore Some of the Historical Buildings.**
 - Replace part of the roof and ceiling of the Stuga (Peasant Home).
 - The doors of the Gammelkyrkan (Old Church) are warped and the walls are bowing.
 - Repaint the artwork on the Stuga (Peasant Home) door and barn quilt on the Ladugården (Barn).



Need for a Capital Campaign

HISTORICAL BUILDINGS AND ARTIFACTS

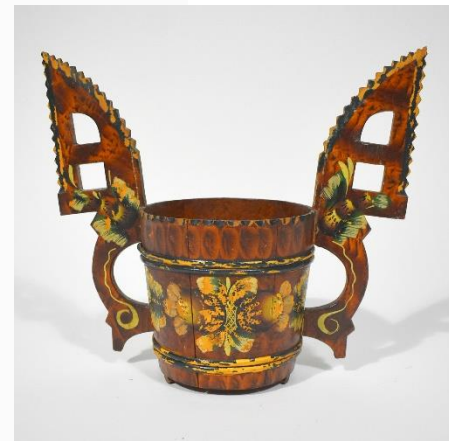
- **Safeguard the Collection.**
 - The collection consists of over 3,300 artifacts stored in closets, dressers, bins, cardboard boxes, plastic containers, and the basement. Funds from the campaign will help secure appropriate storage for the artifacts.



Need for a Capital Campaign

HISTORICAL BUILDINGS AND ARTIFACTS

- **Create a Digital Collection Management System.**
 - Transfer information from paper records to a computer system.
 - Complete an inventory of all artifacts and assess their condition.
 - Photograph each artifact and share them (along with a description) on a searchable database on the museum's website and on social media.



Need for a Capital Campaign

ACCESSIBILITY AND SAFETY

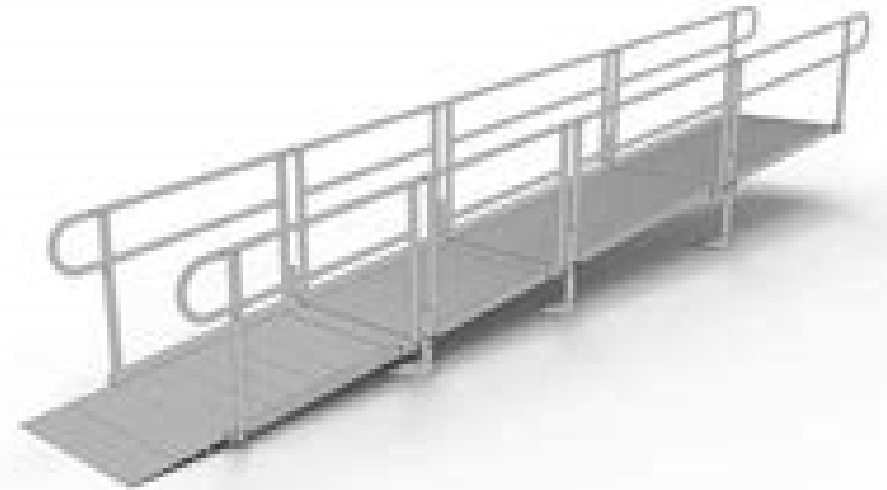
- Begin Work on Accessible Pathways and Ramps to Link All Buildings.



Need for a Capital Campaign

ACCESSIBILITY AND SAFETY

- Replace Ramps on the South and West Sides of the Välkommen Hus (Welcome House).



Need for a Capital Campaign

ACCESSIBILITY AND SAFETY

- **Install New Lighting.**
 - The new system will provide better lighting in the Välkommen Hus (Welcome House) for visitors, volunteers, and staff while protecting the artifacts.



Need for a Capital Campaign

ACCESSIBILITY AND SAFETY

- Install Push Bars on the Välkommen Hus (Welcome House) Doors.



Need for a Capital Campaign

ACCESSIBILITY AND SAFETY

- **Create an Emergency Kit including an AED.**



Need for a Capital Campaign

ACCESSIBILITY AND SAFETY

- Add Motion-Detector Lights for the Parking Lot.



Need for a Capital Campaign

OFFICE EQUIPMENT

- Provide Work Spaces and Equipment for New and Additional Staff.



Need for a Capital Campaign

OFFICE EQUIPMENT

- **Create a Reference Library.**
 - Available for staff, volunteers, and visitors.
 - Makes available existing reference books and secures new educational resources for people of all ages.
 - Securely displays books from the 1800s.



Need for a Capital Campaign

CONSERVATION FUND

- **Establish a Conservation Fund.**
 - Reserve funds will be available for ongoing conservation projects to maintain the artifacts. These funds make proactive maintenance possible even in lean years and protect against the deferral of important restoration projects.



Need for a Capital Campaign

HISTORICAL BUILDINGS AND ARTIFACTS

- **Restore Some of the Historical Buildings.**
 - Replace part of the roof and ceiling of the Stuga.
 - The doors of the Gammelkrykan (Old Church) are warped and the walls are bowing.
 - Repaint the artwork on the Stuga door and barn quilt on the Barn.
- **Safeguard the Collection.**
 - The collection consists of over 3,300 artifacts stored in closets, dressers, bins, cardboard boxes, and the basement. Funds from the campaign will help securing appropriate storage for the artifacts.
- **Create a Digital Collection Management System.**
 - Transfer information from paper records to a computer system.
 - Complete an inventory of all artifacts and assess their condition.
 - Photograph each artifact and share them (along with a description of the artifacts) on a searchable database on the museum's website and on social media.

CONSERVATION FUND

- **Establish a Conservation Fund.**
 - Reserve funds will be available for ongoing conservation projects to maintain the artifacts. These funds make proactive maintenance possible even in lean years and protect against the deferral of important restoration projects.

ACCESSIBILITY, SAFETY, AND OFFICE EQUIPMENT

- **Begin Work on Accessible Pathways to Link All Buildings.**
- **Replace Ramps on the South and West Sides of the Välkommen Hus (Welcome House).**
- **Install New Lighting.**
 - The new system will provide better lighting in the Välkommen Hus (Welcome House) for visitors while protecting the artifacts.
- **Install Push Bars on the Välkommen Hus (Welcome House) Doors.**
- **Create an Emergency Kit including an AED.**
- **Add Motion-Detector Lights for the Parking Lot.**
- **Provide Work Spaces and Equipment for New and Additional Staff.**
- **Create a Reference Library.**
 - Available for visitors, volunteers, and staff.
 - Makes available existing reference books and secures new educational resources for people of all ages.



We invite you to partner with us...

- Continue supporting the museum as a member. Your commitment to Gammelgården is vital to our success.
- Volunteer! We have many opportunities for one-time or ongoing volunteers.
- Encourage others to visit Gammelgården to take a class and learn a new skill, go on a tour, or attend one of our events.
- Make a one-time or monthly gift to the capital campaign. Your donation invests in the past while protects the future of the museum.



Thank you

QUESTIONS?